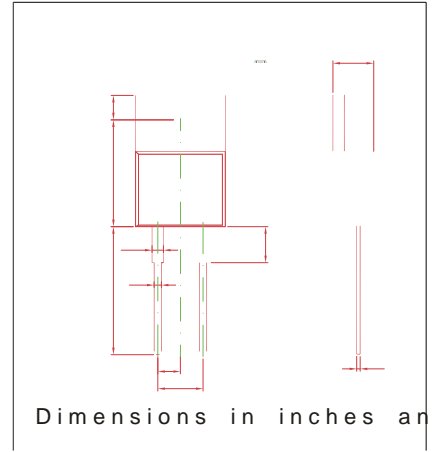


PD: 1.5W (T_a= 25 /)

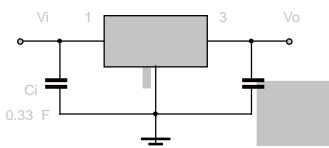
0 (&+\$1, &\$ / '\$7\$
 "&DVH 72 6PDOO 2XWOLQH 3ODVWLF 3DFNDJH
 "3RODULW\ &RORU EDQG GHQRWHV FDWKRGH HQG
 "ORXQWLQJ 3RVLWLRQ \$Q\



3 D U D P H W H U	6 \ P E R O	9 D O X H	8 Q L W
Input Voltage	V _i		V
Thermal Resistance Junction to Case	R _{JA}		/ /W
Operating Junction Temperature Range	T _{OPR}	a 125	/
Storage Temperature Range	T _{STG}	-65 a 150	/

V/Vo

Pulse test.



Note: Bypass capacitors are recommended for optimum stability and transient response and should be located as close as possible to the regulators.

